

KOMATSU

2022



Utility range



**New wheeled and
crawler midi-
excavators**



Compact wheel loaders

Utility range **Highlights 2022**



**A range of new R-5/
MR-5 mini-excavators**



**New rigid and 4-wheel-steering
backhoe loader models**





Mini-excavators

The latest Komatsu MR-5 mini-excavators are packed full of outstanding and improved features. This new generation introduces many industry firsts to the European market: it further harnesses Komatsu's unrivalled technological know-how to bring industry-leading customer values to the mini-excavator sector.

Mini-excavators



Remarkably versatile, Komatsu's mini-excavators are compact, light, and powerful. They can work anywhere, particularly in tight spaces. Perfectly suited to both end-users and rental companies, these machines offer first-class comfort and controllability to the experienced and the novice operator alike.

Mini-excavators

Model	Engine power (ISO 14396)			Operating weight	Max. digging depth	Bucket capacity
	kW	HP	PS			
				kg	mm	m ³
PC09-1	6.8	9.1	9.2	880 - 1080	1465	0.016 - 0.025
PC14R-3	11.6	15.6	15.8	1440 - 1800	2000 - 2250	0.03 - 0.06
PC16R-3	11.6	15.6	15.8	1570 - 1920	2180 - 2410	0.03 - 0.06
PC17R-5	11.4	15.3	15.5	1755 - 1835	2000 - 2200	0.022 - 0.028
PC18MR-5	11.8	15.8	16.0	1900 - 1990	2160 - 2360	0.03 - 0.06
PC20R-5	11.4	15.3	15.5	1985 - 2040	2100 - 2370	0.020 - 0.030
PC24MR-5	15.8	21.2	21.5	2340 - 2620	2315 - 2665	0.035 - 0.085
PC26MR-5	15.8	21.2	21.5	2640 - 2900	2470 - 2720	0.035 - 0.085
PC30MR-5	18.2	24.4	24.7	3140 - 3400	2760 - 3130	0.03 - 0.10
PC35MR-5	18.2	24.4	24.7	3575 - 3835	3110 - 3455	0.04 - 0.12
PC45MR-5	29.1	39.0	39.6	4595 - 5020	3300 - 3705	0.055 - 0.16
PC55MR-5	29.1	39.0	39.6	5160 - 5350	3770 - 4130	0.055 - 0.18
PC58MR-5	29.1	39.0	39.6	5570 - 5640	3770 - 4130	0.055 - 0.18



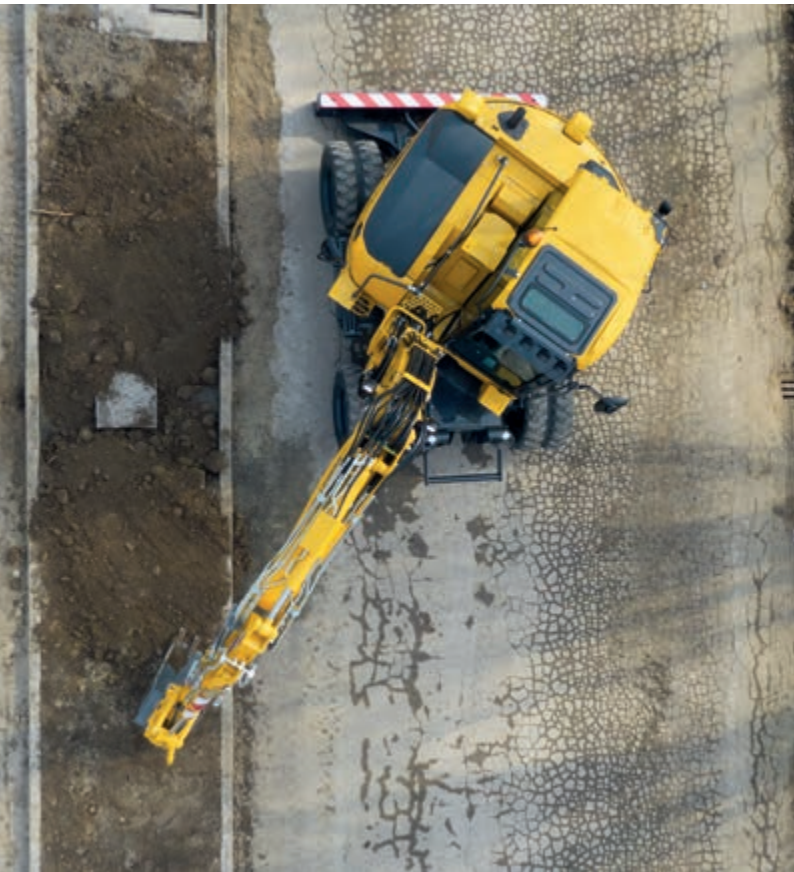




Midi-excavators

Komatsu created midi-excavators as the perfect compromise between the compactness and manoeuvrability of mini-excavators and the power of larger earthmoving machines.

Midi-excavators



Komatsu's crawler and wheeled midi-excavators are specifically designed to work in tight spaces and hard-to-reach areas. With special features and options, these multipurpose machines are equipped with a swing offset boom and can be supplied in customised configurations.

Midi-excavators

Midi-excavators

Model	Engine power (ISO 14396)			Operating weight	Max. digging depth	Bucket capacity
	kW	HP	PS			
PC78US-11	50.7	68.0	68.9	7910 - 8080	4660	0.090 - 0.200
PC80MR-5	46.2	62.0	62.8	8000 - 8270	3975 - 4335	0.130 - 0.270
PC88MR-11	50.7	68.0	68.9	8500 - 9130	4160 - 4675	0.090 - 0.340
PW98MR-11	50.7	68.0	68.9	10090 - 10760	4055 - 4305	0.077 - 0.282
PW138MR-11	72.6	97.3	98.7	13000 - 14300	4180 - 4330	0.093 - 0.400







Skid steer loaders

Just jump in any Komatsu skid steer loader – and enjoy the ride. With a standard joystick and simple controls at your fingertips, you will find these machines as easy to operate as your own car.

Skid steer loaders



Powerful, efficient, and user-friendly, Komatsu skid steer loaders display an impressive digging force and lifting capacity, and are perfectly suited for a large variety of jobs. Their Komatsu engine ensures low fuel consumption and exhausts emissions, with an easy access for maintenance.

Skid steer loaders

Model	Engine power (ISO 14396)			Operating weight	Payload	Breakout force	Bucket capacity
	kW	HP	PS				
SK510-5	23.9	32.1	32.5	1855	455	1250	0.23
SK714-5	34.9	46.8	47.5	2530	650	1716	0.35
SK815-5	36.2	48.5	49.1	2890	700	1716	0.40
SK820-5	36.2	48.5	49.1	3080	900	1867	0.40







Backhoe loaders

With several state-of-the-art innovations, Komatsu backhoe loaders are manufactured to provide the highest level of performance and to meet the particular needs of emerging markets.

Backhoe loaders



Strong of a long tradition of quality and a well established experience in the worldwide industry of backhoe loaders, Komatsu aims to set new benchmarks for the market. Complete optimization of the operator's work environment, state-of-the-art technical solutions, and a wide choice of optional equipment and configurations: as always, the operator is at the centre of Komatsu's attention.

Backhoe loaders

Model	Engine power (ISO 14396)			Operating weight	Travel speed	Bucket capacity
	kW	HP	PS			
WB93R-8	75.0	101	102	7590 - 9500	40	1.03
WB93S-8	75.0	101	102	8105 - 10000	40	1.1
WB97R-8	75.0	101	102	7310 - 9020	40	1.03
WB97S-8	75.0	101	102	8260 - 10000	40	1.1







Compact wheel loaders

A broad choice of attachments, a comfortable seat and a great view. You'll enjoy working at the controls of a Komatsu compact wheel loader, and feel at home on any job site.

Compact wheel loaders



Easy to work with, for any operator, Komatsu compact wheel loaders fully meet customers' needs. User-friendly, they are at home in confined spaces, are handy for moving material on construction and excavation sites, and are equally at ease with road work.

Compact wheel loaders

Compact wheel loaders

Model	Engine power (ISO 14396)			Operating weight	Bucket capacity
	kW	HP	PS		
WA70M-8	46.2	62.0	62.8	4980 - 5300	0.75 - 1.25
WA80M-8	53.7	72.0	73.0	5690 - 5995	0.80 - 1.25
WA100M-8	69.8	93.6	94.9	7075 - 7465	1.05 - 1.80



Your Komatsu partner:

KOMATSU

[komatsu.eu](https://www.komatsu.eu)

