



Operator Training

Directly from the Manufacturer



Driving Academy

Training courses and dates

About Komatsu

About us

The Construction Division of Komatsu Germany GmbH is located at the heart of Europe. Our site in Hanover has a long tradition and lengthy experience in the development and production of construction machinery. The site in Hanover currently employs around 800 people who develop and produce wheel loaders and wheeled excavators, primarily for the European market. In addition, the plant also produces core components including axles and transmission systems.

The focus of our activities is always aligned with the interests and needs of our customers. As the world's second largest manufacturer of construction machinery, Komatsu offers you the opportunity to learn and experience safe and efficient operation of construction machinery through theory and practice at the Komatsu Driving Academy, led by recognised experts.

Through the Komatsu Driving Academy, we aim to give you the opportunity to train both existing and future employees. We also want to support you in your daily challenges and be your pathfinder, enabling you to react to market requirements with greater flexibility.



Komatsu Hanover Innovation and Technical Center (HITeC)

The mainstay of the Komatsu Driving Academy is the Komatsu HITeC and adjacent test and demo area.

This combination offers the ideal conditions for highly effective training courses. In addition to traditional theoretical and practical elements, training courses also include two virtual training instruments such as simulators and the Virtual Reality Room.

The Komatsu Driving Academy

Training offers significant added value for both beginners and experienced operators, taking account current operating knowledge. Training courses cover efficient operation of construction machinery by operators. This can have a major influence on operating costs and on aspects relevant to safety. Through the Komatsu Driving Academy, we aim to give you the opportunity to train both existing and future employees. We also want to support you in your daily challenges and be your pathfinder, enabling you to react to market requirements with greater flexibility.



The core elements of the Komatsu Driving Academy



Construction machinery simulator

Operating simulators allow us to train a wide range of different work situations in a practical manner. The mobile simulator platform, equipped with original seat and control levers, provides a real-life operating experience. The forward view, as seen from the operator, is displayed on three 55" monitors according to the working condition.

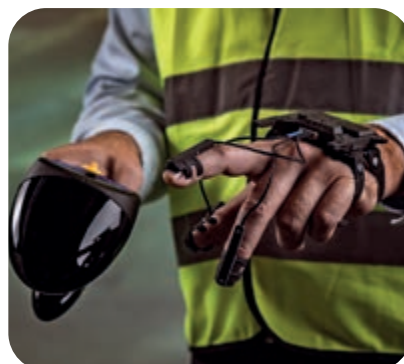
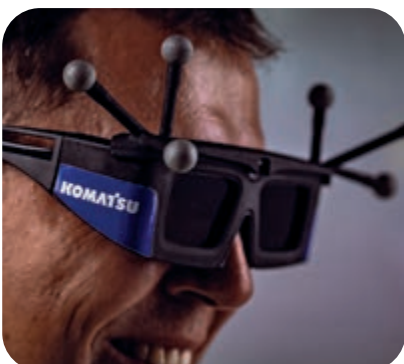
Training is led by a Komatsu expert, who will explain and clarify control levers during the simulation, and train the participant in efficient operation. In addition, the simulator can also be used independently, with basic operating functions explained through training videos. Operators will also receive individual optimisation instructions during the simulation. An automatic evaluation focussing on safe, gentle and efficient operation completes the training and helps to visualise the performance level.

Virtual reality room

Is your team familiar with the detail of servicing and maintenance of your Komatsu machinery?

The VR Room is where we train operators in the structure of the machine and its servicing. The four projection surfaces provide a 'real-life' all-round experience. The benefit of the VR Room is the ability to learn the requisite activities in a clean environment that is protected from the influences of the weather. Other virtual possibilities, such as detailed views of individual components and the insertion of different section planes, help to further enhance technical understanding.

In addition to the Komatsu Driving Academy, the VR Room is also used for virtual service training, helping participants to understand how components and assemblies are installed and disassembled. Different views help to clarify the structure and function of individual components. In addition, the VR Room also accelerates the development of future components through 'virtual installation' as early as the development process. And last but not least, the VR Room also allows us to demonstrate optional equipment on machines.



Test and demo area

The test and demo area allows participants to demonstrate the experience that they have already gained while operating Komatsu machinery. We can then help to optimise what you already know. The knowledge that you gain from training can be used on your machines immediately. Different applications, uses

Safety and function training

Training content

Operation of construction machinery requires a high level of competence. Our trainers will train machine operators in the safe use and function of Komatsu machinery in accordance with DGuV Regulation 101-003, BGR118.

Theory

- The structure and function of construction machinery
- Operator/business obligations
- Safe handling of the machine
- Physical machine basics
- The legal basis for construction machinery

Practice

- Machine instruction
- Driving exercises with and without load
- Different machine exercises
- Departure checks (accident prevention regulations)
- Machine inspections to be carried out daily
- Machine operation training

Target group

Novice operators and experienced machine operators

Objective

Licence for earth-moving machinery (DGuV Regulation 101-003, BGR118)

Training location

Komatsu Germany GmbH,
Hanover

Duration

3 days

Participants

6 to 8 persons

Machinery

Various Komatsu machines

Catering

Lunch and drinks
Evening event on request

Dates

See insert

Day 1	Day 2	Day 3
Theory	Theory	Practice
Theory	Theoretical test	Practical test



Basic training

Training content

Komatsu experts will train wheel loader and excavator operators in general operation by means of simulator-based and machine-based tasks. In addition, the training will also consolidate daily servicing activities as well as safe and productive use of the machine.

Theory

- Daily machine inspection/servicing by the machine operator
- Physical machine basics
- Machine components
- Switch settings and operation of the machine
- Productive use of the machine

Practice

- Daily servicing
- Simulator-based training in different work situations
- The basics of efficient machine operation
- Correct operation in difficult situations

Target group

Beginners/novice operators

Objective

To increase knowledge for sustainable operation of earth-moving machinery.

Training location

Komatsu Germany GmbH,
Hanover

Duration

3 days

Participants

6 to 8 persons

Machinery

Komatsu wheel loaders and
excavators

Catering

Lunch and drinks
Evening event on request

Dates

See insert



Day 1	Day 2	Day 3
Theory	Theory	Theory
Practice	Practice	Theoretical test



Efficiency training

Training content

Data-based and practice-focused training for efficient machine operation. Detailed operational analysis with the Komatsu Edge analysis tool in typical customer applications.

Theory

- Machine settings in detail
- Daily machine inspection/servicing by the machine operator
- Physical details of machine operation
- Efficient machine operation

Practice

- Different activities with WA380 – WA500
- Simulator-based training in efficient machine operation
- In-depth knowledge of efficient machine operation in the test and demo area
- Analysis and individual training based on Komatsu Edge data
- Detailed training in daily servicing in the VR Room

Target group

Experienced machine operators

Objective

To improve operating costs by implementing efficient working practices.

Training location

Komatsu Germany GmbH,
Hanover

Duration

3 days

Participants

6 to 8 persons

Machinery

WA380-8, WA470-8, WA475-10,
WA480-8, WA500-8

Catering

Lunch and drinks
Evening event on request

Dates

See insert

Day 1	Day 2	Day 3
Theory	Theory	Practice
Practice	Practice	Test



Mobile excavator training

Training content

Mobile excavator operators are trained in the general operation and in various practical tasks on the machine. The training includes modules from simulator and real-machine operation. In addition, the daily service tasks and safe and productive handling of the machine are consolidated.

Theory

- Daily machine inspection / servicing by the machine operator
- Switch settings and operation of the machine
- Handling of the machine during tool change (Quick Coupler, Tool-Control)
- Physical machine basics
- Machine components

Practice

- Daily servicing
- Training of different work situations on the simulator and machine
- Basics of efficient machine operation
- Handling the machine during tool change (Quick Coupler, Tool-Control)

Target group

Newcomers/novice operators

Objective

To strengthen knowledge for sustainable and safe operation of wheeled excavators.

Training location

Komatsu Germany GmbH,
Hanover

Duration

2 days

Participants

6 to 8 persons

Machinery

Komatsu wheeled excavators

Catering

Lunch and drinks
Evening event on request

Dates

See insert



Day 1	Day 2
Theory	Theory
Practice	Practice



Information and registration

Have we piqued your interest? You can find a calendar of training dates in the insert. Komatsu experts are ready to share their experience with you. Register for the training course that meets your needs by contacting your Komatsu partner. For individually tailored trainings or 'Train the Trainer' courses please get in touch.



Your Komatsu partner:

KOMATSU

[komatsu.eu](https://www.komatsu.eu)

