



Mining & quarry solutions

Operator guidance monitor

Operator guidance monitor

The operator guidance monitor improves operation efficiency with Key Performance Indicator (KPI) targets that help operators raise and refine their skills, resulting in higher fuel savings and productivity, and increased safety on the jobsite.

Set your targets

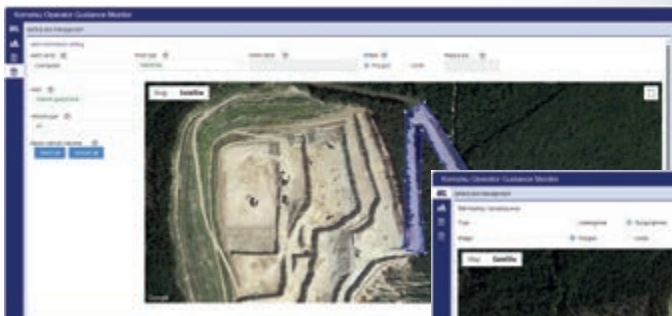
In the back office

- Set up your target KPIs for each haul road, from any remote location
- Follow up the status of each target by date, time, shift or operator
- Define event thresholds such as foot brake usage
- Add geofences with specific instructions to help increase safety and logistics on site



The following KPIs can be set:

Cycle time [min]	Idling rate [%]
Payload [tonne]	Productivity 1 [tonne/h]
Fuel rate [l/h]	Productivity 2 [tonne/l]
Travel time [min]	Fuel consumption [l]





User-friendly

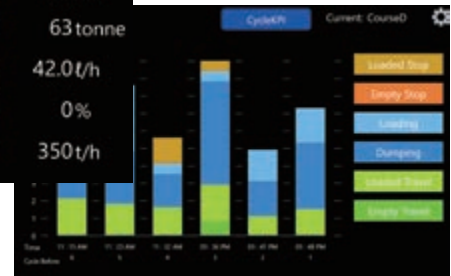
- Easy-to-operate 8" touchscreen monitor
- Automatic course selection

Benefits for the operator

- Real-time feedback of operator behavior
- KPI targets follow-up
- Self-learning is encouraged through real-time 'visualization' of operation performance
- Requires no operator input



Cycle KPI display screen

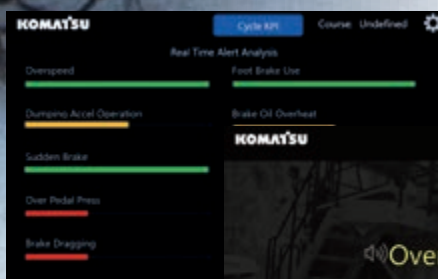


KPI history screen

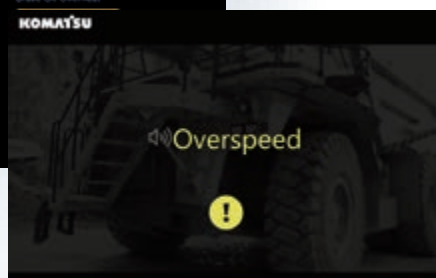
Login screen

Operator identification

- Unique Login ID and password for each operator
- Operators' performances are analyzed individually
- The identification system meets GDPR regulations



Event history screen



Event detection screen

Safety improvements

- OGM screen gives real-time warnings for unsafe operations, such as overspeeding or sudden braking
- Safety warnings are logged

KPI reporting for the back office

Data dashboard software

The automatic data acquisition from the machine allows remote reporting of production and event data via the dashboard. Data can be filtered by date, shift, machine, operator or haul road.



The operator guidance monitor can be retrofitted to new and existing HD465/605/785-7/-8 dump trucks. Please contact your Komatsu distributor for further information.

Your Komatsu partner:

KOMATSU

[komatsu.eu](https://www.komatsu.eu)

