

KOMATSU®

NET HORSEPOWER
180 kW 242 HP @ 1.900 rpm

OPERATING WEIGHT
41.500 kg

MAX. HORIZONTAL REACH
16.655 mm

PC340LC-7 Material handling specification

PC
340

HYDRAULIC EXCAVATOR



PC340LC-7

WALK-AROUND

The PC340-7 is a rugged, productive, all-European machine. Designed and expressly built for European markets, it delivers productivity, reliability and operator comforts in a robust, environmentally friendly package. Komatsu's exclusive, on-board, HydraMind system assists in all operations, providing enhanced machine performance that's always perfectly matched to the task.

What's new on Dash 7:

- Higher production
- Low fuel consumption
- Easier maintenance and serviceability
- Improved operator comfort
- Lower noise
- Meets EC Stage II emission regulations
- Advanced Attachment Control
- Multi-function colour monitor

Advanced Attachment Control

The PC340-7 is equipped to handle a variety of powered attachments. The advanced attachment control system features:

- Operator selectable hydraulic flow control
- Adjustable presets for rapid attachment changeover
- Hydraulic relief pressure control

Excellent reliability and durability

- Heavy-duty work equipment
- Reliable major components designed and built by Komatsu
- Exceptionally reliable electronic devices

In harmony with the environment

- The low emission engine meets EC Stage II emissions standards with increased power and machine productivity
- The economy mode reduces fuel consumption
- Low operating noise
- Designed for easy end-of-life recycling

Special material handling features

- Work equipment optimised for lifting performance, reduced cycle time and large working range
- Increased counterweight to enhance machine stability under high load
- Optional fixed elevated cab, for excellent site visibility
- Mechanically adjustable, wide gauge undercarriage gives ideal solution for stability and transport



NET HORSEPOWER
180 kW 242 HP

OPERATING WEIGHT
41.500 kg

MAX. HORIZONTAL REACH
16.655 mm

GRAPPLE CAPACITY
0,8 - 1,0 m³

Easy maintenance

- Extended hydraulic filter replacement interval
- Remote-mounted engine oil filter and fuel drain valve, for easy access
- Standard-equipped water separator
- Easier radiator cleaning
- Increased fuel tank capacity
- SCSH bushings on the work equipment extend the lubricating interval significantly

SpaceCab™

The new PC340-7's cabin space has been increased by 14%, offering an exceptionally roomy operating environment.

- Sealed and pressurised cab with air conditioning
- Low-noise design
- Low-vibration design with cabin damper mounting
- OPG Level I (ISO) compliant cabin



SPECIFICATIONS



ENGINE

Model Komatsu SAA6D114E-2
 Type Direct injection, water-cooled, emissionised, turbocharged, after-cooled diesel
 Rated capacity 180 kW/242 HP (ISO 9249 Net) at engine speed 1.900 rpm
 No. of cylinders 6
 Bore x stroke 114 x 135 mm
 Displacement 8,27 ltr
 Battery 2 x 12 V/140 Ah
 Alternator 24 V/60 A
 Starter motor 24 V/11 kW
 Air filter type Double element type with monitor panel dust indicator and auto dust evacuator
 Cooling Suction type cooling fan with radiator fly screen



HYDRAULIC SYSTEM

Type HydrauMind. Closed-centre system with load sensing and pressure compensation valves
 Main pump 2 variable displacement piston pumps supplying boom, arm, attachment, attachment rotate, swing and travel circuits
 Maximum pump flow 2 x 268 ltr/min
 Relief valve settings
 Implement 380 kg/cm²
 Travel 380 kg/cm²
 Swing 285 kg/cm²
 Pilot circuit 33 kg/cm²
 Attachment circuit 250 kg/cm²



ENVIRONMENT

Engine emissions Fully complies with EC Stage II exhaust emission regulations
 Noise levels
 LwA external 106 dB(A) (2000/14/EC)
 LpA operator ear 75 dB(A) (2000/14/EC)



OPERATING WEIGHT (APPR.)

Operating weight, including 10,5 m industrial material handling boom, 6,8 m arm, operator, lubricant, coolant, full fuel tank and the standard equipment. Attachment weight not included.



SWING SYSTEM

Type Axial piston motor driving through planetary double reduction gearbox
 Swing lock Electrically actuated wet multi-disc brake integrated into swing motor
 Swing speed 0 - 9,5 rpm



DRIVES AND BRAKES

Steering control 2 levers with pedals giving full independent control of each track
 Drive method Hydrostatic
 Travel operation Automatic 3-speed selection
 Max. travel speeds
 Lo / Mi / Hi 3,2 / 4,5 / 5,5 km/h
 Maximum drawbar pull 26.900 kg
 Brake system Hydraulically operated discs in each travel motor



UNDERCARRIAGE

Construction X-frame centre section with box section track-frames
 Track assembly
 Type Fully sealed
 Shoes (each side) 48
 Tension Combined spring and hydraulic unit
 Rollers
 Track rollers (each side) 8
 Carrier rollers (each side) 2

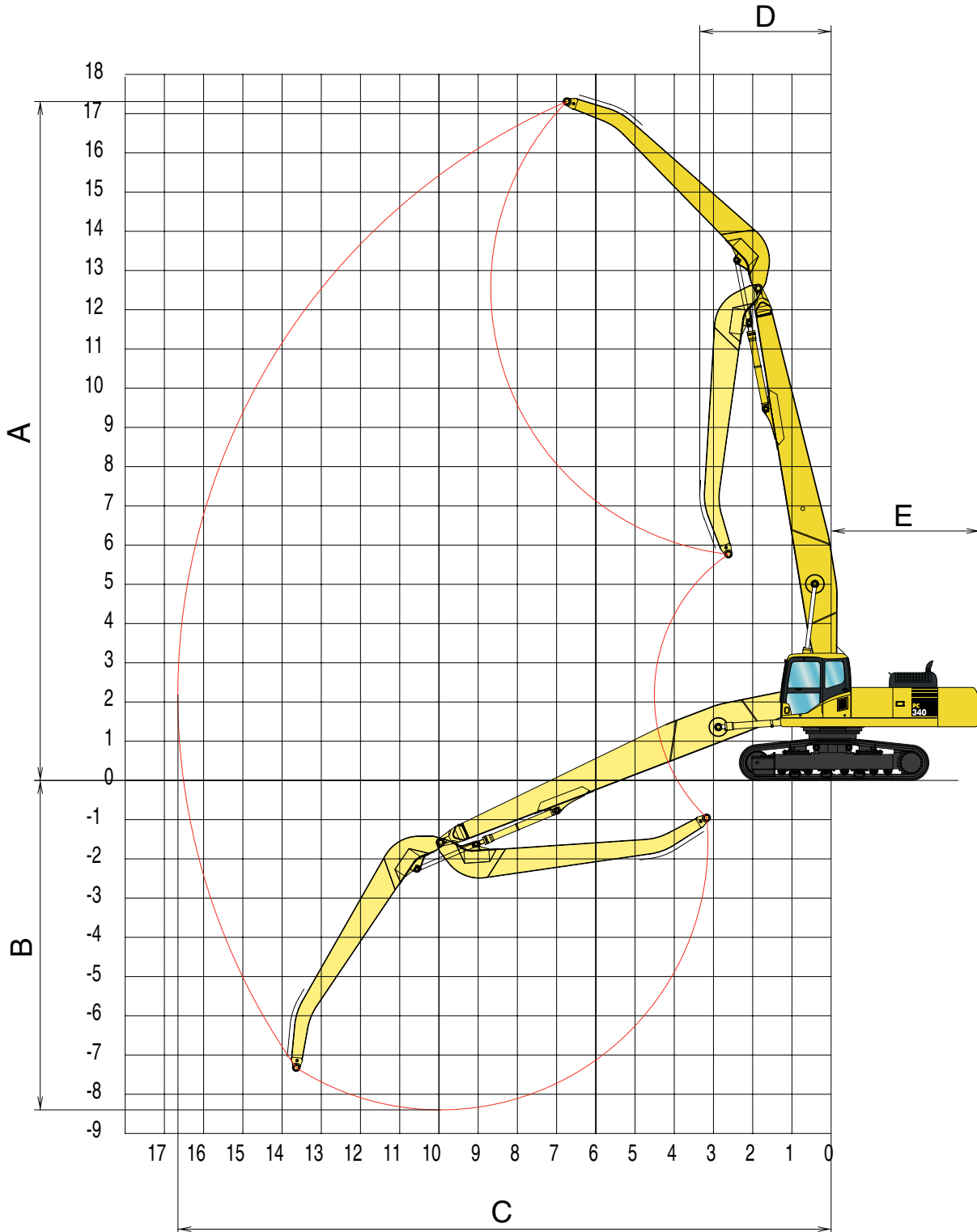


COOLANT AND LUBRICANT CAPACITY (REFILLING)

Fuel tank 605 ltr
 Radiator 32 ltr
 Engine oil 35 ltr
 Swing drive 13,4 ltr
 Hydraulic tank 188 ltr
 Final drive (each side) 8,5 ltr

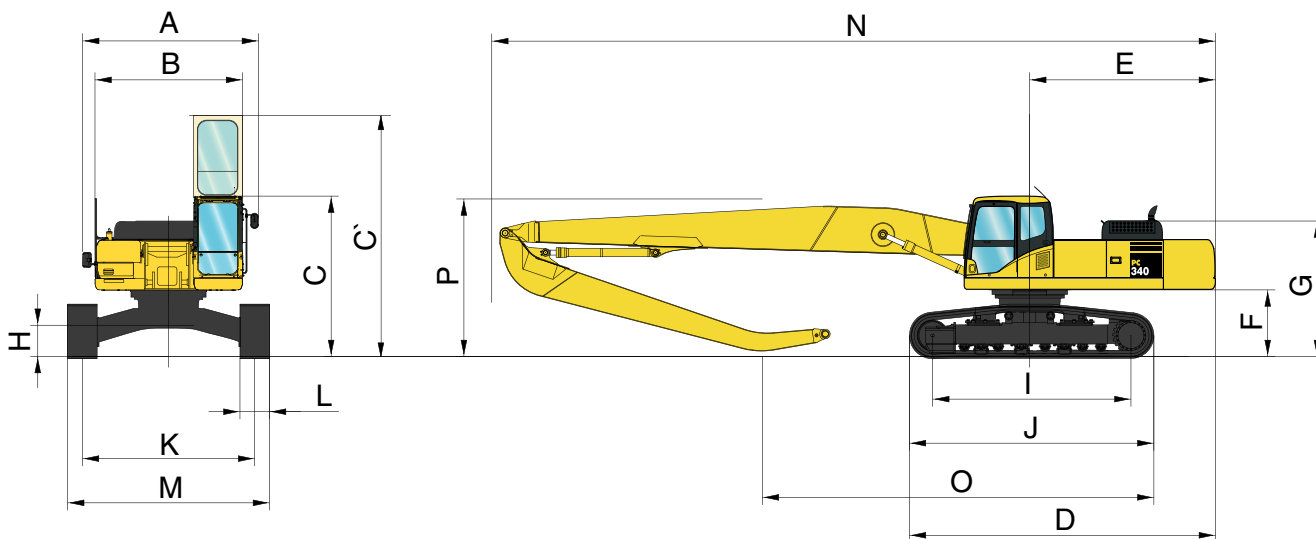
| MATERIAL HANDLING | | |
|----------------------|------------------|-------------------------|
| Triple grouser shoes | Operating weight | Ground pressure |
| 600 mm | 41.500 kg | 0,79 kg/cm ² |
| 700 mm | 41.880 kg | 0,68 kg/cm ² |
| 800 mm | 42.260 kg | 0,60 kg/cm ² |
| 850 mm | 42.450 kg | 0,60 kg/cm ² |

WORKING RANGE



| MATERIAL HANDLING SPECIFICATION | | |
|---------------------------------|-------------------|-----------|
| A | Max. pin height | 17.310 mm |
| B | Max. pin depth | 8.400 mm |
| C | Max. pin reach | 16.655 mm |
| D | Min. swing radius | 3.865 mm |
| E | Tail swing radius | 3.405 mm |

TRANSPORT DIMENSIONS



| MACHINE DIMENSIONS | | PC340LC-7 MH |
|--------------------|--|--------------|
| A | Overall width of upper structure with mirrors and handrail | 3.397 mm |
| B | Overall width of upper structure | 2.955 mm |
| C | Overall height of cab, without 1,6 m fixed cab raiser | 3.130 mm |
| C' | Overall height of cab, including 1,6 m fixed cab raiser | 4.730 mm |
| D | Overall length of basic machine | 6.215 mm |
| E | Tail length | 3.775 mm |
| F | Clearance under counterweight | 1.355 mm |
| G | Machine tail height (top of engine cover) | 2.750 mm |
| H | Ground clearance | 635 mm |
| I | Track length on ground | 4.025 mm |
| J | Track length | 4.965 mm |
| K | Track gauge (extended) | 3.500 mm |
| | Track gauge (retracted) | 2.590 mm |
| L | Track shoe width (standard) | 600 mm |
| M | Overall track width with 600 mm shoe (extended) | 4.100 mm |
| | Overall track width with 600 mm shoe (retracted) | 3.190 mm |
| | Overall track width with 700 mm shoe (extended) | 4.200 mm |
| | Overall track width with 700 mm shoe (retracted) | 3.290 mm |
| | Overall track width with 800 mm shoe (extended) | 4.300 mm |
| | Overall track width with 800 mm shoe (retracted) | 3.390 mm |
| | Overall track width with 850 mm shoe (extended) | 4.350 mm |
| | Overall track width with 850 mm shoe (retracted) | 3.440 mm |
| N | Transport length | 14.700 mm |
| O | Length on ground (transport) | 7.955 mm |
| P | Overall height to top of boom | 3.200 mm |

Attachment guidelines



Log grapple



Multi-tine grab



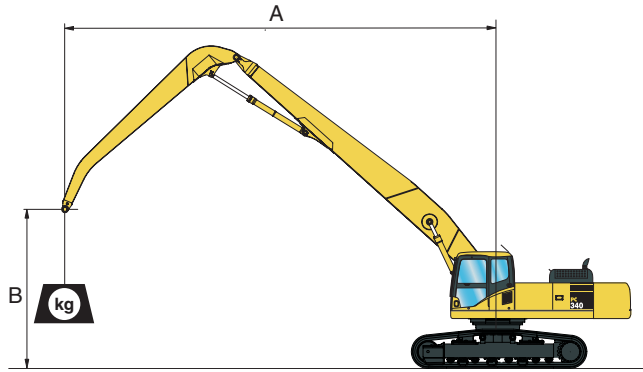
Clamshell

LIFTING CAPACITY

PC340LC-7 MATERIAL HANDLING

- A** - Reach from swing centre
- B** - Bucket hook height
- OF** - Rating over front
- OS** - Rating over side
- MAX** - Rating at maximum reach

No attachment weight included



| B | max | | 16,5 | | 15 | | 13,5 | | 12 | |
|------|-------|-------|-------|-------|-------|-------|-------|-------|-------|-------|
| | OF | OS | OF | OS | OF | OS | OF | OS | OF | OS |
| 18,0 | 7700* | 7700* | | | | | | | | |
| 16,5 | 5100* | 5100* | | | | | | | | |
| 15,0 | 4050* | 4050* | | | | | | | | |
| 13,5 | 3450* | 3450* | | | | | | | 4900* | 4900* |
| 12,0 | 3100* | 3100* | | | | | 4450* | 4450* | 4800* | 4800* |
| 10,5 | 2850* | 2850* | | | 4100* | 4100* | 4400* | 4400* | 4800* | 4800* |
| 9,0 | 2650* | 2650* | | | 4050* | 4050* | 4400* | 4400* | 4850* | 4850* |
| 7,5 | 2500* | 2500* | 3650* | 3600 | 4050* | 4050* | 4450* | 4450* | 4950* | 4950* |
| 6,0 | 2400* | 2400* | 3600* | 3600 | 4050* | 4050* | 4500* | 4500* | 5050* | 5050* |
| 4,5 | 2350* | 2350* | 3600* | 3600 | 4050* | 4050* | 4550* | 4550* | 5150* | 5150* |
| 3,0 | 2300* | 2300* | 3550* | 3550 | 4050* | 4050* | 4600* | 4600* | 5200* | 5200* |
| 1,5 | 2300* | 2300* | 3400* | 3400* | 4000* | 4000* | 4550* | 4550* | 5250* | 5250* |
| 0,0 | 2300* | 2300* | 3250* | 3250* | 3900* | 3900* | 4500* | 4500* | 5200* | 5200* |
| -1,5 | 2350* | 2350* | 2900* | 2900* | 3650* | 3650* | 4300* | 4300* | 5050* | 5050* |
| -3,0 | 2200* | 2200* | 2300* | 2300* | 3350* | 3350* | 4050* | 4050* | 4750* | 4750* |
| -4,5 | 1850* | 1850* | | | 2800* | 2800* | 3600* | 3600* | 4300* | 4300* |
| -6,0 | | | | | 1850* | 1850* | 2900* | 2900* | 3650* | 3650* |
| -7,5 | | | | | | | | | 2750* | 2750* |

| B | 10,5 | | 9 | | 7,5 | | 6 | |
|------|-------|-------|-------|-------|-------|-------|-------|-------|
| | OF | OS | OF | OS | OF | OS | OF | OS |
| 18,0 | | | | | | | | |
| 16,5 | | | 6350* | 6350* | 7050* | 7050* | | |
| 15,0 | 5450* | 5450* | 5950* | 5950* | | | | |
| 13,5 | 5300* | 5300* | 5800* | 5800* | | | | |
| 12,0 | 5250* | 5250* | 5550* | 5550* | | | | |
| 10,5 | 5250* | 5250* | 5250* | 5250* | | | | |
| 9,0 | 5350* | 5350* | 5150* | 5150* | | | | |
| 7,5 | 5500* | 5500* | 5400* | 5400* | 4700* | 4700* | | |
| 6,0 | 5700* | 5700* | 6300* | 6300* | 5800* | 5800* | | |
| 4,5 | 5850* | 5850* | 6800* | 6800* | | | | |
| 3,0 | 6000* | 6000* | 7050* | 7050* | | | | |
| 1,5 | 6100* | 6100* | 7200* | 7200* | | | | |
| 0,0 | 6050* | 6050* | 7250* | 7250* | | | | |
| -1,5 | 5900* | 5900* | 6950* | 6950* | 8400* | 8400* | | |
| -3,0 | 5700* | 5700* | 6550* | 6550* | 7800* | 7800* | 8350* | 8350* |
| -4,5 | 5200* | 5200* | 5950* | 5950* | 6950* | 6950* | 8000* | 8000* |
| -6,0 | 4500* | 4500* | 5100* | 5100* | 5850* | 5850* | 6550* | 6550* |
| -7,5 | 3400* | 3400* | 4000* | 4000* | 4500* | 4500* | | |

Lifting capacities are stated in kg, on the tip of the arm, for machine on firm, level supporting surface. The weight of any attachment used should be deducted from the values shown, to calculate payload. Indicated loads are based on ISO10567 standard and do not exceed 75% of tipping or 87% of hydraulic capacity (indicated by *). Lifting capacity of the machine is limited by machine stability, hydraulic capacity and maximum permissible load of the attachment.

HYDRAULIC EXCAVATOR



STANDARD EQUIPMENT

- | | | | |
|---|--|---|--|
| <ul style="list-style-type: none"> • Komatsu SAA6D114E-2 180 kW direct injection emissionised Stage II intercooled turbocharged engine • Double element type air cleaner with dust indicator and auto-dust evacuator • Suction type cooling fan with radiator fly screen • Automatic fuel line de-aeration • Engine key stop • Alternator 24 V/60 A • Batteries 2 × 12 V/140 Ah • Starter motor 24 V/11 kW • Electronic closed-centre load sensing (E-CLSS) hydraulic system (HydrauMind) • Pump and engine mutual control (PEMC) system • Multi-function colour monitor with equipment management monitoring system (EMMS) • 4-working mode selection system; Active mode, economy mode, | <ul style="list-style-type: none"> breaker mode and lifting mode • Special counterweight for industrial handling work • In-line filter for hydraulics • PowerMax function • Auto-deceleration function • Automatic engine warm-up system • Engine overheat prevention system • Fuel control dial • Adjustable PPC wrist control levers with 3 button controls for arm, boom, swing and rotating attachment • PPC control levers and pedals for steering and travel • One extra hydraulic function, for rotating attachments • Hydrostatic, 3-speed travel system with automatic shift and planetary gear type final drives, and hydraulic travel and parking brakes • SpaceCab™; Highly pressurised and tightly sealed viscous mounted cab with tinted safety glass | <ul style="list-style-type: none"> windows, opening roof hatch with window pull-up type front window with locking device, removable lower window, front window wiper with intermittent feature, ashtray, luggage box, floor mat • Track roller guards • Parts book and operator manual • Lockable fuel cap and covers • Remote greasing for swing circle and pins • Fuel supply pump • Track frame under-guards • 12 Volt power supply • Overload warning device • Boom safety valves • Climate control/Air conditioning • Large handrails and rear-view mirrors • Cigarette lighter • Radio cassette preparation • Beverage holder and magazine rack • Electric horn • Hot and cool box | <ul style="list-style-type: none"> • Toolkit and spare parts for first service • Lights; 2 revolving frame lights and 1 boom light • Suspension seat with adjustable arm rests and retractable seat belt • Engine ignition can be password secured on request • Standard colour scheme and decals • Long straight boom and long gooseneck arm for industrial handling work • Special undercarriage with variable gauge for industrial handling work • Heavy-duty reinforced revolving frame, for industrial handling work • Arm safety valves |
|---|--|---|--|

OPTIONAL EQUIPMENT

- | | | | |
|---|---|---|--|
| <ul style="list-style-type: none"> • 600, 700, 800, 850 mm triple grouser track shoes • Heavy-duty undercovers • Automatic greasing system | <ul style="list-style-type: none"> • OPG top guard • OPG front guard • Heated air suspension seat • Full length track roller guards | <ul style="list-style-type: none"> • Radio cassette • Service points • Beacon preparation • Bio oil | <ul style="list-style-type: none"> • Additional cab roof lights • Rain visor • Fixed high cab frame with walkway access |
|---|---|---|--|



Komatsu Europe International NV
 Mechelsesteenweg 586
 B-1800 VILVOORDE (BELGIUM)
 Tel. +32-2-255 24 11
 Fax +32-2-252 19 81
 www.komatsueurope.com

UESS005500 09/2004

Materials and specifications are subject to change without notice.
KOMATSU is a trademark of Komatsu Ltd. Japan.